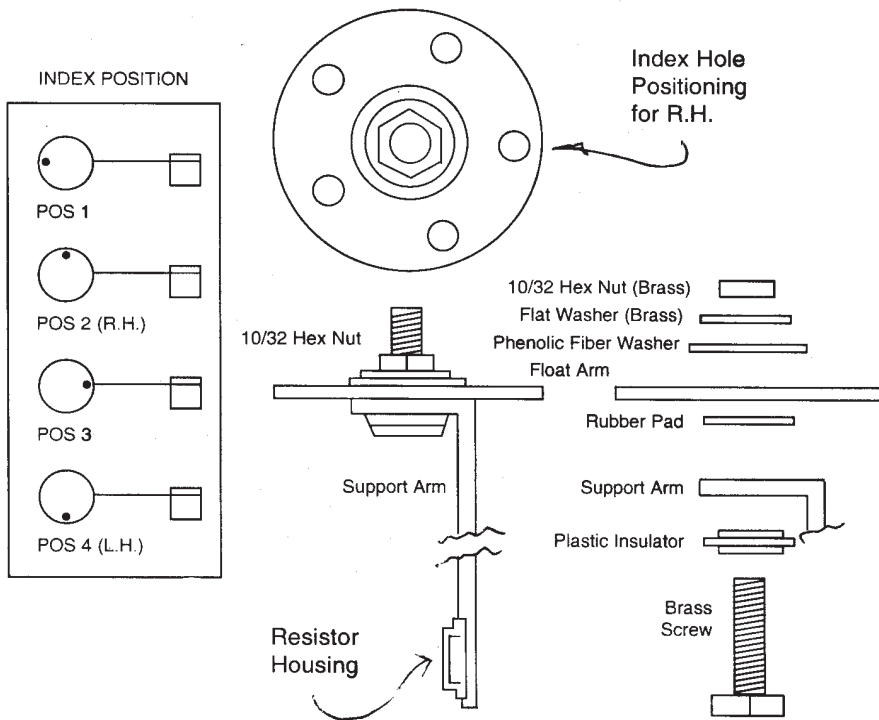


# CAUTION

## DISCONNECT BATTERY CABLE BEFORE INSTALLING FUEL LEVEL SENDER

### INSTALLATION INSTRUCTIONS FOR FUEL SENDER

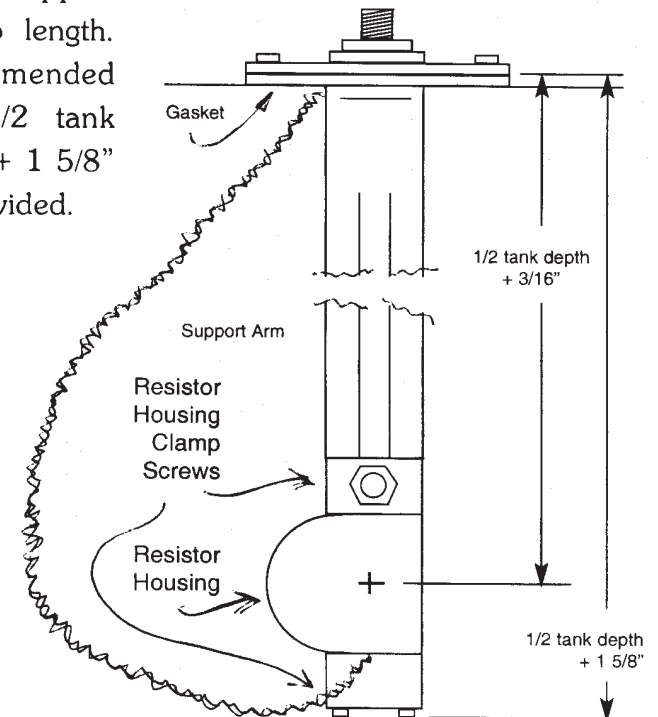
Step 1. Determine required arm float position. (Unless otherwise specified, senders are assembled for R.H. float arm position). Position is determined by comparing the screw hole pattern on the tank to the pictures below.



Step 2. If necessary to reposition float arm in any direction, loosen 10/32 hex nut and rotate index hole as per the above mentioned index position. If hex nut is removed from stud, care must be taken that sealing hardware is correctly reassembled onto stud. See build-up of parts above. Do not tighten hex nut on stud.

Step 3a. Loosen resistor housing clamp screws and slide to this position which is  $1/2$  tank depth +  $3/16$ " (tank depth measured from bottom of the mounting flange). Tighten two screws in resistor housing.

Step 3a. Cut support arm to length. Recommended that  $1/2$  tank depth +  $1 5/8$ " be provided.



Step 4. Cut lead wire from housing to suitable length and strip end insulation from 1" wire. Thread stripped wire through slot in insulator and under stud. Tighten hex nut on stud.

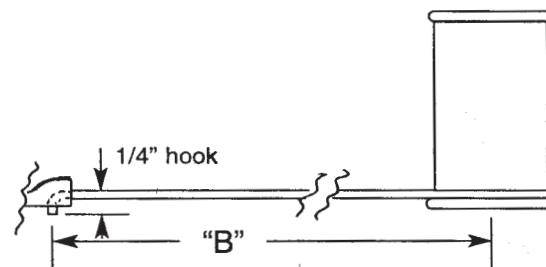
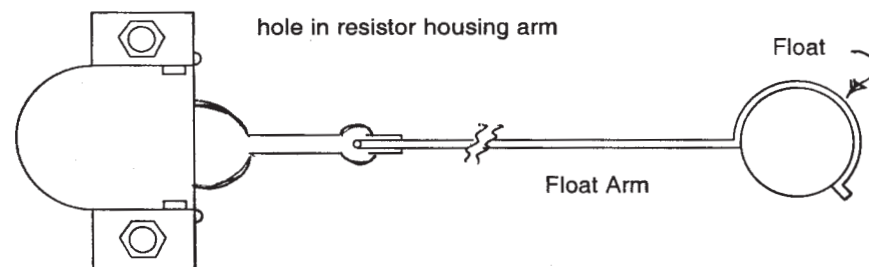
Step 5. Bend float arm to "B" dimension. Care should be taken in handling the float arm when the float has been installed. Any damage to the float will cause the sender to be in error. "B" dimensions for tank depths of " to 24" are as follows:

A	B	A	B	A	B
6	1 15/16	12	5 13/16	18	9 3/4
6 1/2	2 1/4	12 1/2	6 3/16	18 1/2	10 1/16
7	2 9/16	13	6 1/2	19	10 7/16
7 1/2	2 15/16	13 1/2	6 13/16	19 1/2	10 3/4
8	3 1/4	14	7 1/8	20	11 1/16
8 1/2	3 1/2	14 1/2	7 1/2	20 1/2	11 7/16
9	3 7/8	15	7 13/16	21	11 3/4
9 1/2	4 3/16	15 1/2	8 1/8	21 1/2	12 1/16
10	4 1/2	16	8 7/16	22	12 3/8
10 1/2	4 7/8	16 1/2	8 3/4	22 1/2	12 11/16
11	5 3/16	17	9 1/8	23	13
11 1/2	5 1/2	17 1/2	9 7/16	23 1/2	13 3/8
				24	13 11/16

A. Tank Depth

B. Float Arm Bend Dimension

Cut off excess, leaving 1/4" hook on float arm when float is flat in the horizontal position. Insert this hook into the hole provided in the resistor housing arm. Crimp resistor housing arm firmly around the float arm. Straighten float arm if necessary.



Step 6. Carefully position gasket under flange by moving gasket over float, float arm, support arm and resistor housing.

Step 7. Install completed sender in tank by threading the sender, float end first, into tank mounting hole. Carefully align sender flange screw hole pattern with mounting screw hole pattern.

Step 8. Install all 5 mounting screws and tighten securely. If sealing screws are used, the sender flange must be grounded to the vehicle chassis (a wire should be connected between the metal flange and a metal chassis part).